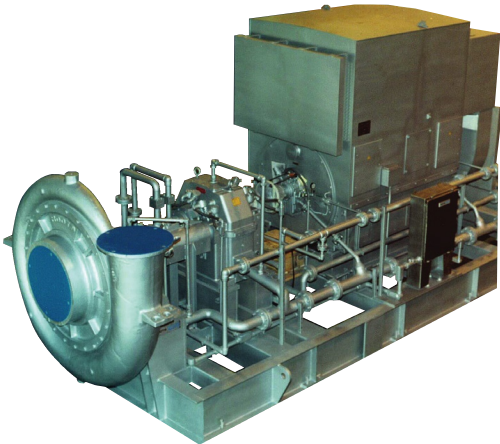




Overhung impeller with bearing housing

ROOTS® OIB Compressor



PSI Prolew Inc.

975 Selkirk, Pointe-Claire
Québec, Canada H9R 4S4
Tél: (514) 697-7867
Fax: (514) 697-0057
www.psiprolew.com



PSI Prolew Inc.

3750A Laird Road, Unit 1,
Mississauga, ON L5L 0A6
Tel: (905) 820-6330
Fax: (905) 820-6338
www.psiprolew.com

For further information contact:

ROOTS
900 W. Mount Street,
Connersville, Indiana, 47331
USA

Tel: +1 765 827 9200
Web: www.RootsBlower.com

ROOTS® OIB single-stage centrifugal compressors feature an overhung impeller arrangement with its own bearing housing to provide maximum design flexibility. This compressor is suitable for a variety of constant speed or variable speed drivers.

Adjustable inlet guide vanes are generally used to control the capacity on a constant speed driver arrangement. Choices in materials of construction and impeller configurations are available to fit your specific application needs.

- Choice of impeller and casing materials of construction
- Polytropic heads to 42,000 ft.
- Flows from 5000 to 250000 cfm (8495 to 424753 m3/hr)
- API capability
- ROOTS Control packages

