

Backward-inclined fans

High flow: Up to 100,000 CFM
 High temperature: Up to 1000°F
 SWSI and DWDI configurations available

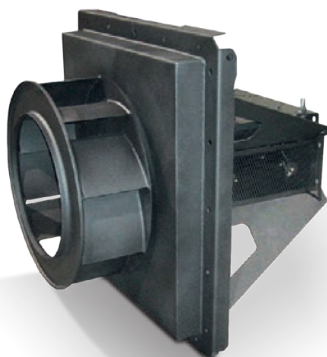


PSI Prolew Inc.
 3750A Laird Road, Unit 1
 Mississauga, ON L5L 0A6
 Tel: (905) 820-6330
 Fax: (905) 820-6338
www.psiprolew.com



BCA, BCS backward-inclined fans, single width

Volumes to 100,000 CFM
 Pressures to 25" WG
 AMCA certified for air and sound performance
 Available in belt driven and direct driven configurations
 Wheel types: Backward curved and airfoil blade
 Continuously welded, heavy gauge, field rotatable housings
 (Rotatable on fan sizes 122 thru 330 only)
 Available in eighteen basic fan sizes
 Customized options available



QBCA, QBCS backward-inclined fans, square housed

Volumes to 43,000 CFM
 Pressures to 17" WG
 AMCA certified for air and sound performance
 Available in belt driven & direct driven configurations
 Wheel types: Backward curved & airfoil blade
 Compact continuously welded, heavy gauge, field rotatable square housings (Rotatable to four discharge positions)
 Available in fourteen basic fan sizes
 Customized options available

PBCA, PBCS backward-inclined plug fans

Volumes to 90,000 CFM
 Pressures to 12" WG
 Available in belt driven configuration only
 Wheel types: Backward curved & airfoil blade
 Continuously welded insulated plug for high or low temperature applications
 Available with or without housing, inlet venturi and venturi supports
 Available in sixteen basic fan sizes and three standard plug depths
 Customized options available

DBCA, DBCS backward-inclined fans, double width

Volumes to 190,000 CFM
 Pressures to 20" WG
 Available in belt driven configuration only
 Wheel types: Backward curved & airfoil blade
 Continuously welded, heavy gauge, field rotatable housings (Rotatable on fan sizes 122 thru 330 only)
 Available in sixteen basic fan sizes
 Also available in DQBCA & DQBCS compact square design
 Customized options available