

www.howden.com

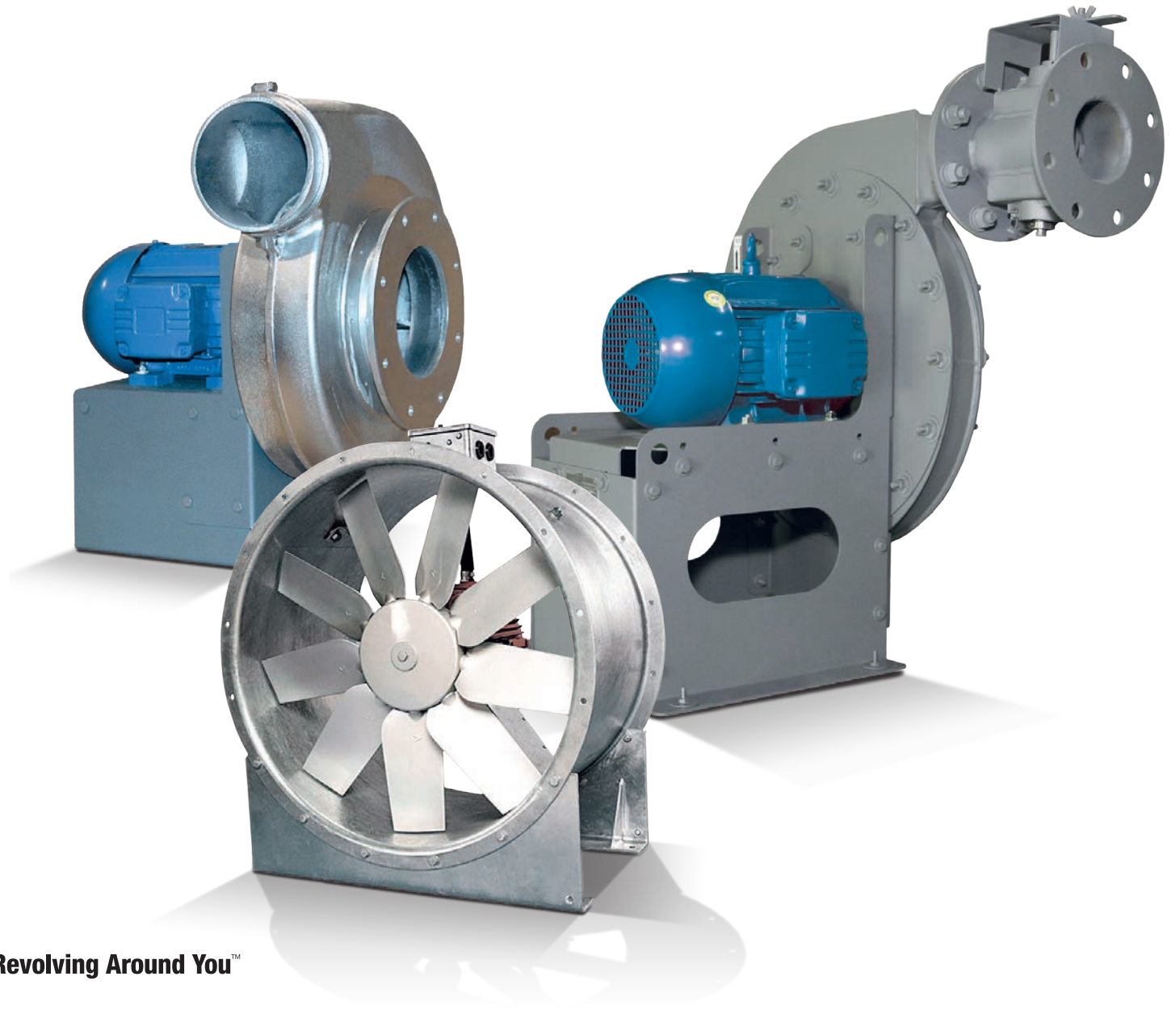


**PSI Prolew Inc.**  
3750A Laird Road, Unit 1  
Mississauga, ON L5L 0A6  
Tel: (905) 820-6330  
Fax: (905) 820-6338  
www.psiprolew.com



# Axial Fans and Centrifugal Blowers

For industrial, process, marine and HVAC applications



**Revolving Around You™**

# Howden excels in configuring and customizing our products to meet a customer's specific application, whether a single unit or OEM serial production.

---

Howden covers the market segments of industrial, HVAC and Navy/DOD, marine and off-shore. We offer a global product catalog, ensuring the right product fit for your application.



Howden is a truly global company, with an established presence in more than 26 countries across every continent. Our network of local support services enables us to respond urgently to customer queries and maintenance requirements, and we understand the importance of local circumstances, from environmental legislation to energy costs.



Every product we deliver is backed by an unequivocal lifetime commitment to spare parts and product support. Replacement parts are made using the original production drawings, so that compatibility and quality are guaranteed. We also offer a full upgrade and enhancement program that allows customers to take advantage of new developments, or adapt existing equipment to changed conditions.

# Pressure and utility blowers

High flow: Up to 12,000 CFM  
High pressure: Up to 110" water gauge  
Clean air, particulate and material handling applications



## AF cast aluminum pressure blowers

Volumes to 3,800 CFM

Pressures to 20" WG

Available in direct driven and belt driven configurations

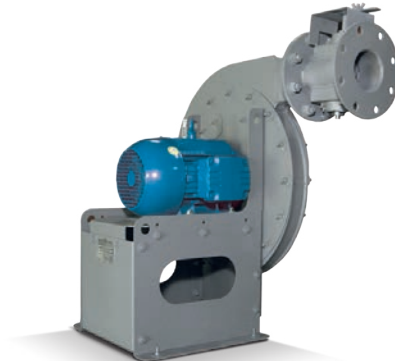
Wheel types: Backward curved, forward curved and radial blade

Corrosion and spark resistant aluminum wheels

Light weight and rugged split cast aluminum field rotatable housings. Available with fabricated steel wheels and housing as option

Available in six basic fan sizes

Customized options available



## Turbo pressure blowers

Volumes to 9,200 CFM

Pressures to 86" WG

Available in direct driven and belt driven configurations

Wheel types: Backward curved and radial blade

Continuously welded, heavy gauge housings

Available in eight basic fan sizes

Customized options available



## RB pressure blowers

Volumes to 12,000 CFM

Pressures to 110" WG

Available in direct driven and belt driven configurations

Wheel type: Radial blade

Continuously welded, heavy gauge housings

Available in twenty-five basic fan sizes

Customized options available



## SMB/SMD forward curved utility blowers

Volumes to 4,800 CFM

Pressures to 3" WG

Available in belt driven and direct driven configurations

Wheel type: Forward curved

Continuously welded, field rotatable housings

Packaged utility set

Available in six basic fan sizes

Customized options available



## SC forward curved volume blowers

Volumes to 1,400 CFM

Pressures to 4" WG

Available in belt driven and direct driven configurations

Wheel type: Forward curved

Light weight and rugged split cast aluminum field rotatable housings

Available in four basic fan sizes

Customized options available

# Backward-inclined fans

High flow: Up to 100,000 CFM  
 High temperature: Up to 1000°F  
 SWSI and DWDI configurations available

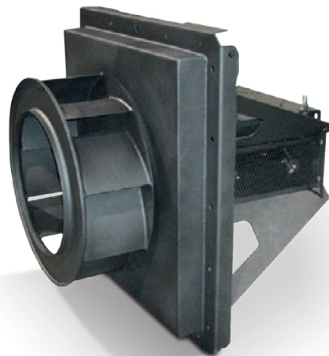
## BCA, BCS backward-inclined fans, single width

Volumes to 100,000 CFM  
 Pressures to 25" WG  
 AMCA certified for air and sound performance  
 Available in belt driven and direct driven configurations  
 Wheel types: Backward curved and airfoil blade  
 Continuously welded, heavy gauge, field rotatable housings  
 (Rotatable on fan sizes 122 thru 330 only)  
 Available in eighteen basic fan sizes  
 Customized options available



## QBCA, QBCS backward-inclined fans, square housed

Volumes to 43,000 CFM  
 Pressures to 17" WG  
 AMCA certified for air and sound performance  
 Available in belt driven & direct driven configurations  
 Wheel types: Backward curved & airfoil blade  
 Compact continuously welded, heavy gauge, field rotatable square housings (Rotatable to four discharge positions)  
 Available in fourteen basic fan sizes  
 Customized options available



## PBCA, PBCS backward-inclined plug fans

Volumes to 90,000 CFM  
 Pressures to 12" WG  
 Available in belt driven configuration only  
 Wheel types: Backward curved & airfoil blade  
 Continuously welded insulated plug for high or low temperature applications  
 Available with or without housing, inlet venturi and venturi supports  
 Available in sixteen basic fan sizes and three standard plug depths  
 Customized options available



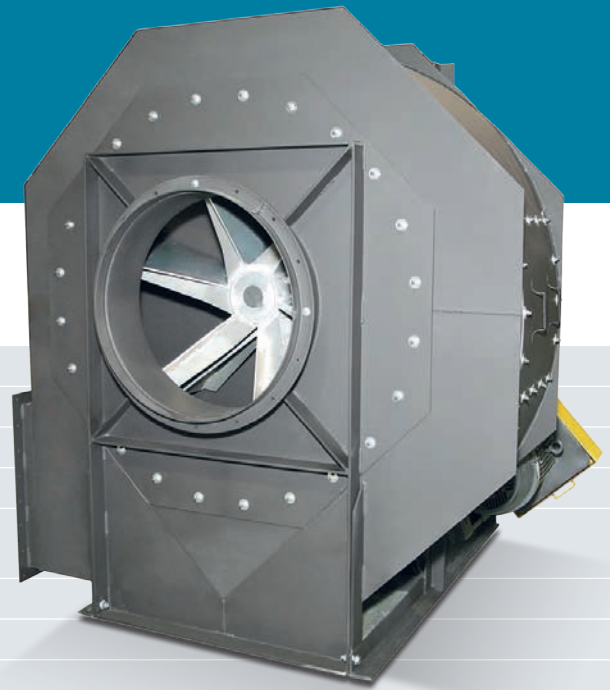
## DBCA, DBCS backward-inclined fans, double width

Volumes to 190,000 CFM  
 Pressures to 20" WG  
 Available in belt driven configuration only  
 Wheel types: Backward curved & airfoil blade  
 Continuously welded, heavy gauge, field rotatable housings (Rotatable on fan sizes 122 thru 330 only)  
 Available in sixteen basic fan sizes  
 Also available in DQBCA & DQBCS compact square design  
 Customized options available



# Industrial exhausters

High flow: Up to 40,000 CFM  
High pressure: Up to 23" water gauge



- Volumes to 40,000 CFM
- Pressures to 23" WG
- Available in belt driven and direct driven configurations
- Wheel type: Radial blade
- Continuously welded, heavy gauge, field rotatable and reversible housings (Rotatable, reversible on fan sizes 7 thru 21 only)
- Air handling or severe duty material handling applications
- Available in twelve basic fan sizes
- Customized options available

# PL plenum fans

High flow: Up to 50,000 CFM  
High pressure: Up to 10" water gauge



- Volumes to 50,000 CFM
- Pressures to 10" WG
- Available in belt & direct driven configurations
- Wheel type: Backward curved
- Welded, heavy gauge, frame
- Rugged, easily adjustable motor mount
- Available in thirteen basic fan sizes
- Customized options available

# Axial fans

High flow: Up to 425,000 CFM  
 High pressure: Up to 13" water gauge

## JM aerofoil fans

Volumes to 425,000 CFM

Pressures to 10.5" WG

Available in both tube axial and vane axial designs

AMCA certified for air performance on direct drive fans

Available in direct driven and belt driven configurations

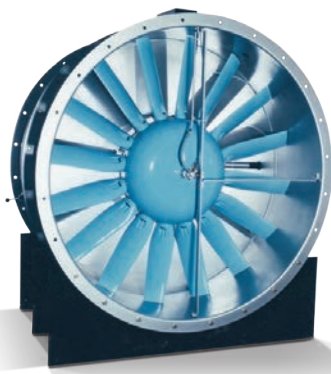
Impeller type: Adjustable pitch (at rest) cast aluminum

Compact, low cost, high efficiency, rugged design

Available in twenty-one basic fan sizes

Smoke exhaust applications

Customized options available



## Evase JMG fans

Volumes to 150,000 CFM

Pressures to 10.5" WG

Available in direct driven configuration only

Impeller type: Adjustable pitch (at rest) cast aluminum

Saves energy and space by incorporating a built-in outlet cone

Available in eleven basic fan sizes

Customized options available

## Varofoil controllability pitch fans

Volumes to 400,000 CFM

Pressures to 13" WG

Available in direct driven configuration only

Impeller type: Adjustable pitch (at rest) or controllability pitch (in motion) cast aluminum

Significant power savings, reliable and low maintenance

Available in thirteen basic fan sizes

Customized options available

## Mixed flow "plus" fans

Volumes to 65,000 CFM

Pressures to 7" WG

Available in belt driven configuration only

Impeller type: Hybrid, welded steel

Compact, quiet and efficient

Available in eleven basic fan sizes

Customized options available

# Howden exceeds customer requirements with specially designed and configured products.

Howden offers a wide variety of speciality fans and product spares for legacy brands.



Roof ventilation



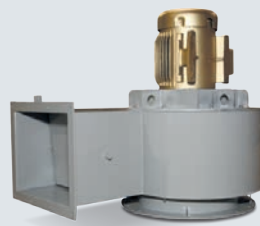
Special OEM fans



Dust collection



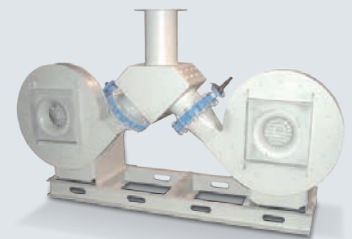
Navy-maritime duty



Flange mounted fan



Parking garages



Back up fan system

## Howden American Fan Company supported brands

American Fan Company

Fläkt Woods® GII\*

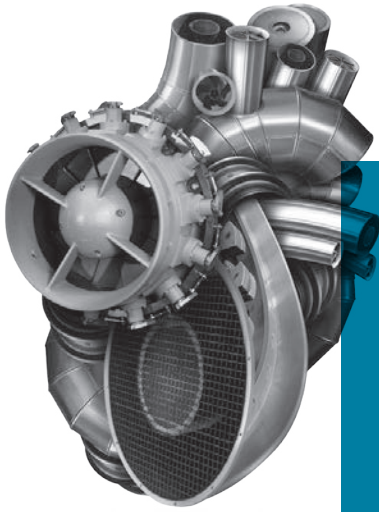
Garden City Fan

Joy Fans

\*Fläkt Woods® is a registered trademark of Fläkt Woods AB. Its use does not imply any affiliation with or endorsement by them.

## Howden acquired and supported brands

Aeolus	Berry Fans	Donkin® Blowers	James Howden	Reavell Centrifugal	TLT-Babcock
Aerodyne Fans	Buffalo Forge	Donkin® Fans	Majax™ Fans	Safanco® Fans	Turbowerke Meissen
Aerex® Fans	Burton Corblin® Compressors	Engart® Fans	Nordisk Fans	Sheldon Fans	Variax®
Airscrew	Canadian Blower	ExVel	Novenco®	Sirocco®	Ventilatoren Sirocco
Airtech Fans	Carter Fans	Fantecnic Fans	Periflow® Compressors	Sofrair Blowers	Voith Fans
Alphair Ventilating Systems	ČKD Kompresory	Godfrey Blowers	Pitstock Fans	Stork Fans	Waller
American Blower	Covent Fans Inc.	Gýrol® Fluid Drives	Phoenix Fans	Sturtevant Fans	Westinghouse Fans
American Standard	Davidson Fans	Howden Sirocco Fans & Heaters	Powermax Fans	Thomassen Compression Systems	Wolf Fans
					Wheeler Fans



## At the heart of your operations

Howden people live to improve our products and services and for over 160 years our world has revolved around our customers. This dedication means our air and gas handling equipment adds maximum value to your operations. We have innovation in our hearts and every day we focus on providing you with the best solutions for your vital operations.



**PSI Prolew Inc.**  
**3750A Laird Road, Unit 1**  
**Mississauga, ON L5L 0A6**  
**Tel: (905) 820-6330**  
**Fax: (905) 820-6338**  
**www.psiprolew.com**



### Howden American Fan Company

Factory/office  
2933 Symmes Rd  
Fairfield  
OH 45014-2099

**Tel:** 1-866-771-6266  
**Fax:** 1-513-870-6249  
**Email:** haf.sales@howden.com

### **Revolving Around You™**