



PSI Prolew Inc.

975 Selkirk, Pointe-Claire,

Québec, Canada H9R 4S4

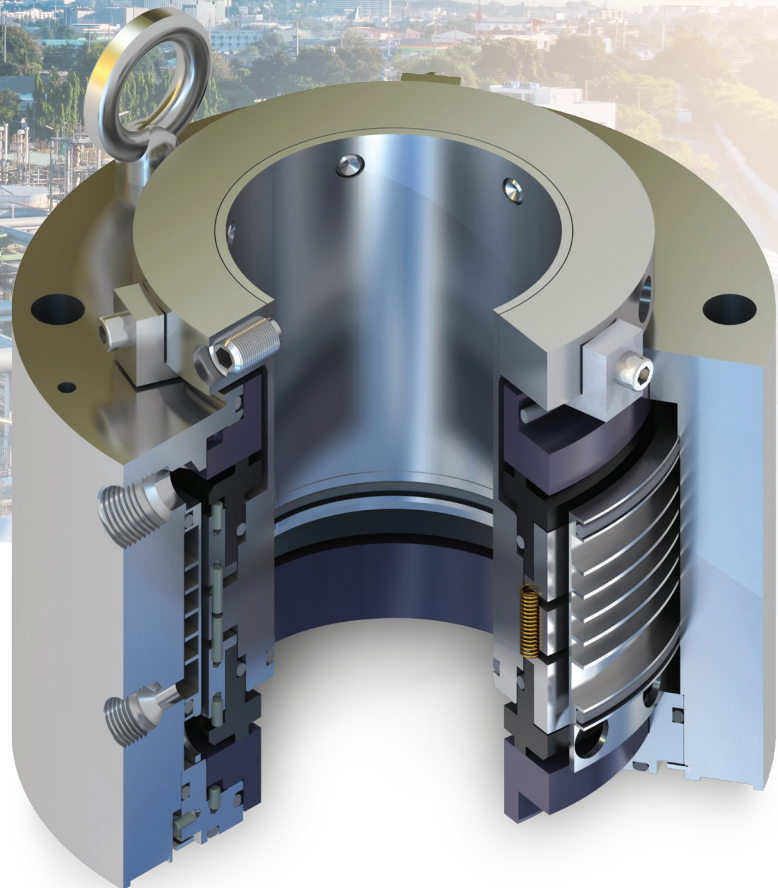
Tél: (514) 697-7867

Fax: (514) 697-0057

www.psiprolew.com

M-Series Top-Entry Mixer Seals

Versatile cartridge seals designed for
top-entry mixing equipment



Experience In Motion



Unprecedented flexibility to meet challenging mixer applications

Sealing mixing equipment can be challenging. Product contamination, high pressures, shaft run-out, spatial limitations and emissions control are just a few of the potential issues that need to be considered when determining the proper seal.

With unprecedented flexibility in one cartridge, M-Series top-entry mixer seals from Flowserve are designed to provide versatile and reliable performance for a wide range of mixer applications.

Key features and benefits

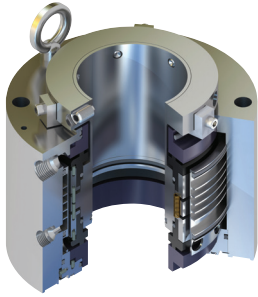
- **Standardized seal designs** permit interchangeability of seal housing, sleeves and glands for applications in liquid-lubricated, dry-running or full fluid-film face technologies.
- **Non-contacting gas barrier** technology enables operation at 0 rpm.
- **Tolerates radial run-out** of up to 3.2 mm (0.126 in.) total indicator reading (TIR); eliminates bearing from the housing and permits reduced shaft diameters for lower cost.
- **Standard shaft-centered seal housings** reduce the need for critical shaft-to-flange bore radial alignment (concentricity).

- **Economical high-alloy options** provide superior performance in harsh, corrosive environments.
- **Available sanitary gland with debris well** for applications requiring steam cleaning.
- **Cooling canister seal chamber liner** efficiently removes heat in the seal area.
- **MD and MW designs** feature pressure-reversal capabilities for greater seal integrity under off-design operation.
- **Hydraulically balanced stators** reduce high-pressure loading, minimizing seal face distortion and leakage.
- **RedRaven Ready** to be compatible with Flowserve's condition monitoring hardware.

Materials of construction

- Metal components:
 - 316 stainless steel for major metal parts
- Rotating face:
 - Carbon, tungsten carbide, silicon carbide
- Stationary face:
 - Silicon carbide, tungsten carbide
- Gaskets:
 - Fluoroelastomer

M-Series mixer seal platform



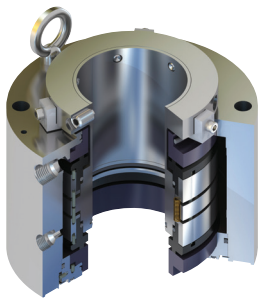
MW-200

Liquid-barrier, dual-pressurized mixer seal

- Internal cooling option for higher temperatures available
- Cooling flange for higher temperatures up to 300°C (572°F) available
- Product-side seal has reverse-pressure capability
- Available with or without bearing
- Designed for steel- or glass-lined vessels
- DIN compatibility available

Operating parameters

- **Pressure:** Vacuum to 32 bar (464 psi)
- **Temperature:** -40°C to 150°C (-40°F to 302°F)
- **Radial run-out:** Up to 3.2 mm (0.126 in.) TIR
- **Speed:** Up to 225 rpm
- **Shaft size:** 20 to 165 mm (0.750 to 6.500 in.)



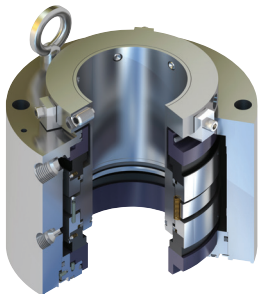
MD-200

Gas-barrier, dry-contacting, dual-pressurized mixer seal

- Product-side seal has reverse-pressure capability
- Dry-running for minimized product contamination from barrier fluid
- Features self-lubricating faces
- Cooling flange for higher temperatures up to 200°C (392°F) available
- Available with or without bearing
- Optional debris well at inboard seal
- Available for steel- or glass-lined vessels
- DIN compatibility available

Operating parameters

- **Pressure:** Vacuum to 6.7 bar (97 psi)
- **Temperature:** -40°C to 150°C (-40°F to 302°F)
- **Radial run-out:** Up to 3.2 mm (0.126 in.) TIR
- **Speed:** Up to 300 rpm
- **Shaft size:** 20 to 165 mm (0.750 to 6.500 in.)



ML-200

Gas-barrier, non-contacting, dual-pressurized mixer seal

- Advanced lift-off technology avoids wear from seal face contact
- Barrier leakage does not affect product quality
- Dynamic O-ring designed to eliminate hang-up
- Operates with a simple gas barrier support system
- Optional with or without bearing
- Cooling flange for higher temperatures up to 300°C (572°F) available
- DIN compatibility available

Operating parameters

- **Pressure:** Vacuum to 6.7 bar (97 psi)
- **Temperature:** -40°C to 260°C (-40°F to 500°F)
- **Radial run-out:** Up to 3.2 mm (0.126 in.) TIR
- **Speed:** Up to 500 rpm
- **Shaft size:** 20 to 165 mm (0.750 to 6.500 in.)



Better understand conditions inside mechanical seals with RedRaven



Proactive mechanical seal maintenance is one of the best ways to improve equipment reliability. With RedRaven from Flowserve, you'll be able to monitor M-Series mixer seal temperatures, pressures and flow rates, enabling plant operators and technicians to virtually see inside your mechanical seals. This means corrective actions can be taken sooner, often preventing unplanned shutdowns. By proactively addressing equipment issues, uptime can be improved, maintenance costs can be reduced, and — most importantly — safety and reliability increase.

Discover more at: Flowserve.com/RedRaven

Seal support systems



NR reservoirs

NR Series reservoirs are ideally suited for sustaining Plan 52 unpressurized and Plan 53A pressurized operations. Available in many pre-engineered configurations or customizable to your requirements, these reservoirs are easy to install and maintain with water or other barrier/buffer fluids.



API Plan 54 circulators

API Plan 54 circulators are designed to provide clean barrier fluid at a controlled flow rate, pressure and temperature. Flowserve offers a complete line of standard circulators for a wide range of sealing applications and custom-designed circulation systems based on your specifications.

Flowserve Corporation
5215 North O'Connor Blvd.
Suite 700
Irving, Texas 75039-5421 USA
Telephone: +1 937 890 5839

Flowserve Corporation has established industry leadership in the design and manufacture of its products. When properly selected, this Flowserve product is designed to perform its intended function safely during its useful life. However, the purchaser or user of Flowserve products should be aware that Flowserve products might be used in numerous applications under a wide variety of industrial service conditions. Although Flowserve can provide general guidelines, it cannot provide specific data and warnings for all possible applications. The purchaser/user must therefore assume the ultimate responsibility for the proper sizing and selection, installation, operation, and maintenance of Flowserve products. The purchaser/user should read and understand the Installation Instructions included with the product, and train its employees and contractors in the safe use of Flowserve products in connection with the specific application.

While the information and specifications contained in this literature are believed to be accurate, they are supplied for informative purposes only and should not be considered certified or as a guarantee of satisfactory results by reliance thereon. Nothing contained herein is to be construed as a warranty or guarantee, express or implied, regarding any matter with respect to this product. Because Flowserve is continually improving and upgrading its product design, the specifications, dimensions and information contained herein are subject to change without notice. Should any question arise concerning these provisions, the purchaser/user should contact Flowserve Corporation at any one of its worldwide operations or offices.

©2022 Flowserve Corporation. All rights reserved. This document contains registered and unregistered trademarks of Flowserve Corporation. Other company, product, or service names may be trademarks or service marks of their respective companies.

SSBR000515-00 (EN/AQ) May 2022

