

KINNEY® KMBD™ Mechanical Boosters

Mechanical boosters are used to “supercharge” vacuum pumps to greatly extend pump performance. This allows for much faster pumping speeds and deeper vacuum levels. KMBD mechanical boosters from Tuthill Vacuum & Blower Systems are utilized worldwide in the manufacture of chemicals, petrochemicals, plastics, semiconductors and wood composites as well as food processing, vacuum furnace applications and many other general applications in industry.

Optional Materials and Coatings Available

Standard construction materials include cast iron housing, end plates and port fittings with ductile iron rotors and shafts. In addition to standard construction, the following materials are available:

Special Materials

Ductile Iron
Steel
Stainless Steel
Hastelloy®

Special Coatings

Armoloy® electrochromium
Nickel
Ryton® polyphenylene sulfide (PPS)

Low Mechanical Noise

Every KMBD mechanical booster is designed to operate at 82 dB(A) or less at blank-off (open field; motor and background noise excluded)

Versatile Drive Configurations

KMBD Mechanical Boosters are supplied with a heavy-duty drive shaft for either direct coupled or belt-driven applications.

Material Specifications

Housing: Cast iron
End Plates: Cast iron
End Covers: Cast iron
Rotors: Ductile iron
Shafts: Ductile iron cast integrally with rotors
Drive Shaft: KMBD 200/400 - Ductile iron
All others - SAE 4140 forged alloy steel

Bearings:

Gear end - All models: Double row ball, both rotors
Back end - KMBD 200/400 – 4500: Cylindrical roller
KMBD 5500 – 10000: Double row ball

Drive Shaft:

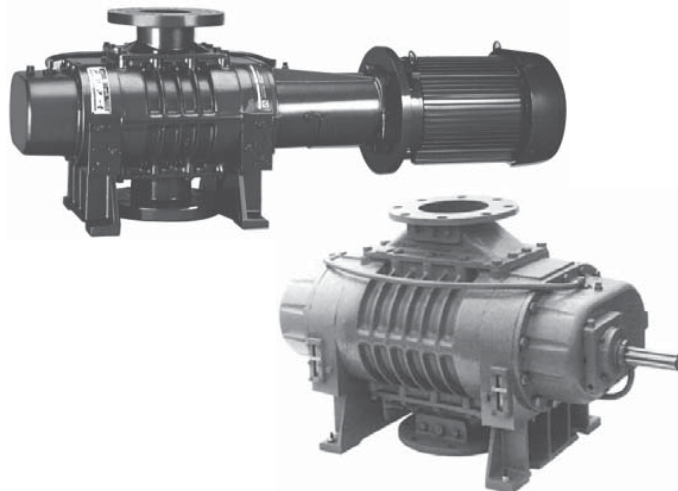
KMBD 200/400 – 720: Double row ball
KMBD 850 – 2700: Single row ball
KMBD 2900 – 4500: Cylindrical roller
KMBD 5500 – 10000: Spherical roller

Gears: Heat-treated alloy steel, helical cut & precision ground

Seals: Drive shaft – Mechanical
Rotor shafts – Non-contacting slinger
(Mechanical seals optional)

Lubrication:

KMBD 200/400 – 2700: Oil splash system, both ends
KMBD 2900 – 7300: Oil splash system standard,
Integral pressure lube optional
KMBD 800 – 10000: Integral pressure lube standard



Optional Motor Mounting Flanges

All KMBD 200/400 – 4500 models are available with flange adapters for mounting either a NEMA C-face motor (up to 75 HP) or an IEC D-flange motor (up to 55 kW) directly to the mechanical booster, eliminating the need for a separate base mounted assembly and coupling guard for the mechanical booster. Specify “C” suffix.

Metric Availability

All KMBD Mechanical Boosters are available with metric drive shaft and process connections.

Individually Tested

Every KMBD mechanical booster is fully factory run tested, including blank-off test and heat run to assure you of the highest quality. Tuthill Vacuum & Blower Systems goes the distance to insure that your mechanical booster meets our rigid ISO 9001 registered quality standards.

Worldwide Sales and Service

With sales offices and service facilities located on six continents, you can be assured of availability and service for your KMBD Mechanical Boosters.



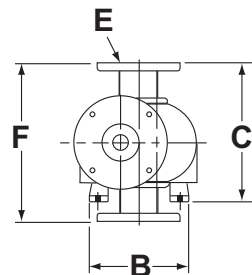
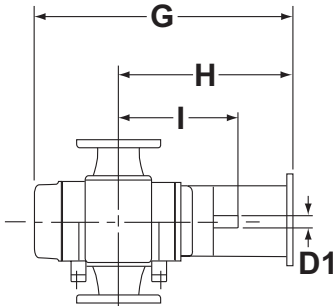
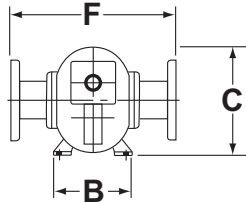
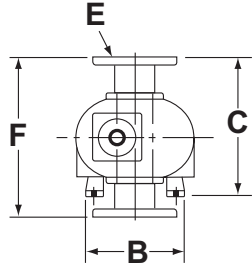
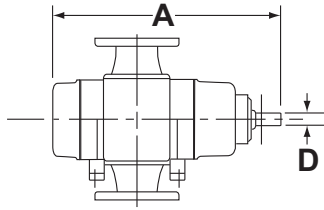
PSI Prolew Inc.

163, Labrosse, Pointe-Claire,
Québec, Canada H9R 1A3
Tél: (514) 697-7867
Fax: (514) 697-0057
www.psiprolew.com

KMBD™ Vacuum Boosters Dimensional Table

Values shown are approximate and should not be used for construction.

Certified drawings are available through your local Tuthill Vacuum & Blower Systems Sales Professional



MODEL	DISPL. CFM / m ³ /h	A	B	C	D Ø	D1* Ø	E	F	G	H	I
KMBD 200/400	400 / 680	24.63	9.00	12.94	1.125	.875	4" ANSI	14.88	26.69	17.06	14.00
		25.25	7.00	10.06							
KMBD 540	540 / 918	27.69	12.00	15.50	1.125	.9995	4" ANSI	15.00	27.63	16.56	13.88
		27.69	9.00	12.25							
KMBD 720	720 / 1223	30.69	12.00	15.50	1.125	.9995	4" ANSI	15.00	30.63	18.06	15.38
		30.69	9.00	12.25							
KMBD 850	800 / 1359	29.19	16.00	20.50	1.375	1.375	6" ANSI	20.00	29.00	17.63	14.13
		29.81	12.25	16.38							
KMBD 1200	1200 / 2039	32.69	16.00	20.50	1.375	1.375	6" ANSI	20.00	32.50	19.38	15.88
		33.31	12.25	16.38							
KMBD 1600	1600 / 2720	35.69	16.00	20.50	1.375	1.375	6" ANSI	20.00	35.50	20.88	17.38
		36.31	12.25	16.38							
KMBD 2000	2000 / 3400	39.69	16.00	20.50	1.375	1.375	8" ANSI	20.00	39.50	22.88	19.38
		40.31	12.25	16.38							
KMBD 2700	2700 / 4590	45.69	16.00	20.50	1.375	1.375	10" ANSI	20.00	45.50	25.88	22.38
		46.31	12.25	16.38							
KMBD 2900	3000 / 5100	51.69	17.50	25.63	2.375	1.875	10" ANSI	23.50	45.31	19.94	23.38
				25.75							
KMBD 3600	3600 / 6117	55.69	17.50	25.63	2.375	1.875	12" ANSI	23.50	49.31	21.94	25.38
				25.75							
KMBD 4500	4600 / 7816	60.69	17.50	25.63	3.125	1.875	12" ANSI	23.50	54.31	24.44	27.88
				25.75							
KMBD 5400	5500 / 9400	61.50	22.88	28.25	3.125	—	14" ANSI	30.69	—	—	—
			13.81	32.69							
KMBD 7300	7300 / 12400	70.19	22.88	28.25	3.125	—	16" ANSI	30.69	—	—	—
			13.81	32.69							
KMBD 8000	9400 / 16000	86.75	33.75	29.31	3.500	—	18" ANSI	26.00	—	—	—
			20.38	40.50							
KMBD 10000	12700 / 21600	98.75	33.75	29.31	3.500	—	20" ANSI	26.00	—	—	—
			20.38	40.50							

* The shaft diameters identified as "D1" apply only to C-Face vacuum boosters.



PSI Prolew Inc.

163, Labrosse, Pointe-Claire,
Québec, Canada H9R 1A3

Tél: (514) 697-7867

Fax: (514) 697-0057

www.psiprolew.com



Tuthill Vacuum & Blower Systems

4840 West Kearney Street

Springfield, Missouri USA 65803-8702

o 417.865.8715 800.825.6937 f 417.865.2950

<http://vacuum.tuthill.com>